



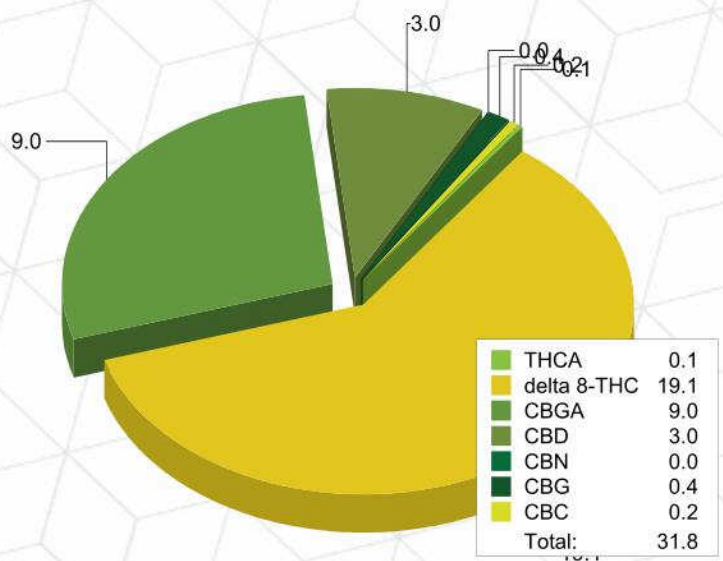
### 2032 Infused CBG 6.21.21

Sample ID: G1F0418-03 Matrix: Industrial Hemp  
Test ID: 5016103  
Source ID:  
Date Sampled: 06/23/21 Date Accepted: 06/23/21  
Harvest/Prod. Date: 6/21/21

### Potency Analysis

Date/Time Extracted: 06/25/21 11:33 Analysis Method/SOP: 215 Batch Identification: 2126049

Cannabinoids	LOQ (%)	% by Wt.	mg/g	Cannabinoids Profile
Total THC	0.009080	0.08519	0.8519	
Total CBD	0.002075	2.962	29.62	
Total CBG	0.006320	8.289	82.89	
THCA	0.002920	0.09713	0.9713	
delta 9-THC	0.009080	< LOQ	< LOQ	
delta 8-THC	0.03592	19.10	191	
THCV	0.005055	< LOQ	< LOQ	
THCVA	0.001885	< LOQ	< LOQ	
CBD	0.001555	2.962	29.62	
CBDA	0.002075	< LOQ	< LOQ	
CBDV	0.005000	< LOQ	< LOQ	
CBDVA	0.001640	< LOQ	< LOQ	
CBN	0.002990	0.04452	0.4452	
CBG	0.006320	0.4058	4.058	
CBGA	0.006320	8.979	89.79	
CBC	0.008965	0.1783	1.783	



Total THC = delta 9-THC + (THCA \* 0.877)  
Total CBD = CBD + (CBDA \* 0.877)  
Total CBG = CBG + (CBGA \* 0.878)  
LOQ=Limit of Quantification, the lowest measurable concentration of an analyte.



*Brittany Wiemer*  
Brittany Wiemer  
Quality Officer - 6/28/2021

These results relate only to the sample included on this report. The report may not be reproduced except in full, without the written permission of Green Leaf Lab.  
This is for informational testing and is not compliance testing. Lab results apply to the sample as received.